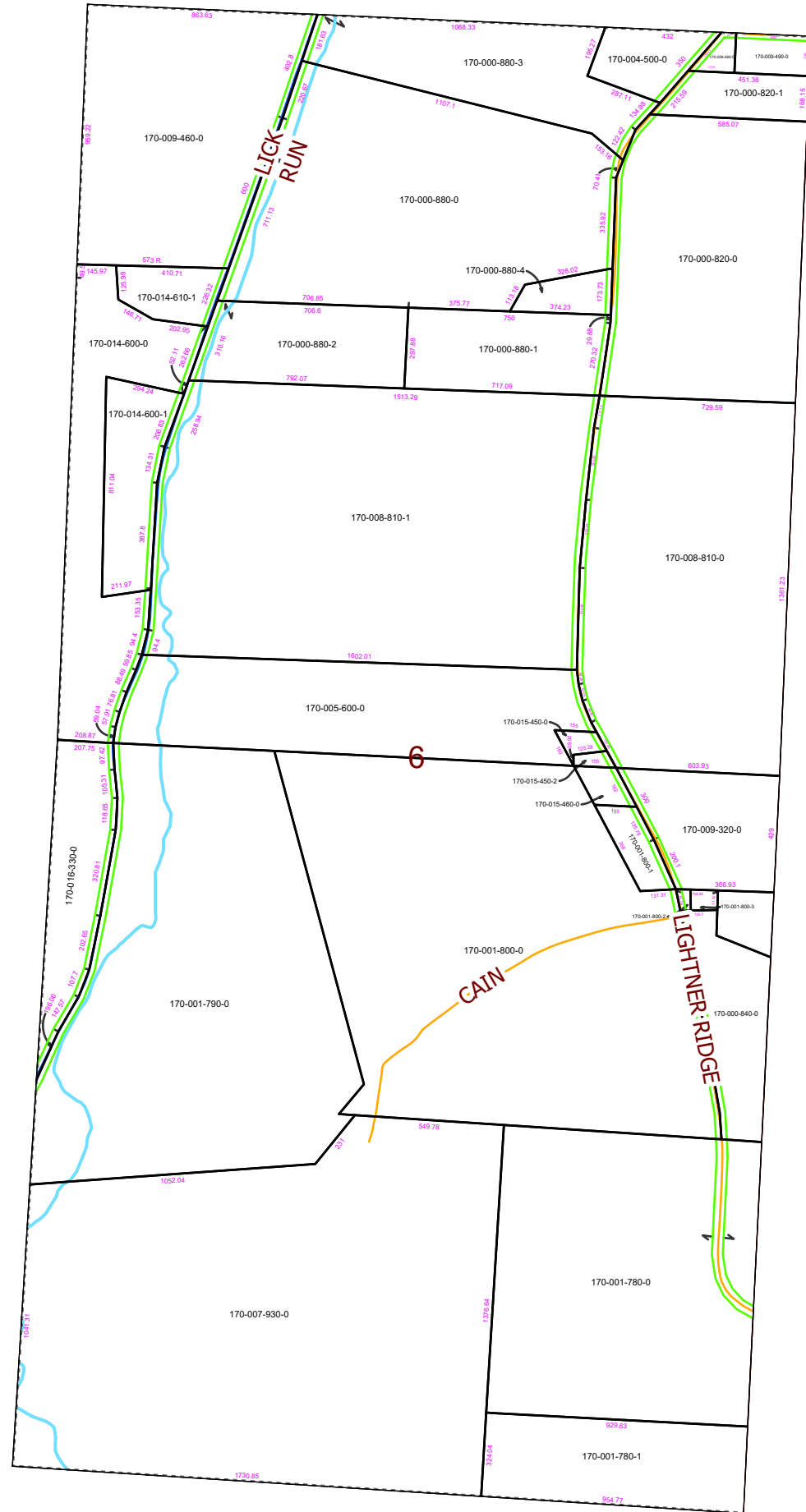


MORGAN COUNTY, OHIO

WINDSOR TWP. FRAC. 6, T-8, R-12



PIN	Owner	LegalDescr	VOL	PAGE
U/I				
170-014-600-1	BAR B INVESTMENT GROUP LLC	R12 T08 S00 SD 71	OR235	1657
100-000-650-0	BRAGG FRANK & LORETTA	R12 T08 S05 SD 1-25	D.V 117	329
170-001-780-0	CAIN-LIGHTNER RIDGE ROAD FAMILY TRUST ETAL SURVIVORSHIP	R11 T08 S06 SD	OR233	5301
170-001-780-1	CAIN JONATHAN A	R11 T08 S06 SD 72	OR219	820
170-001-800-1	CAIN RONALD S & RON	R12 T08 S06 SD 64	OR218	655
170-007-930-0	CAIN RONALD STEWART	R12 T08 S00 FR 6 SD	OR35	256
170-001-800-0	CAIN RONALD STEWART	R12 T08 S06 SD 43		
170-001-790-0	CAIN RONALD STEWART	R12 T08 S00 FR 6 SD		
170-000-820-0	CARNES FRANK KEVIN	R12 T08 S06 SD 60	OR211	1354
170-008-810-1	EDDLBLELUTE SCOTT D	R12 T8 FR6 SD73	OR232	136,220
170-004-500-0	EDDLBLELUTE SCOTT D TOD GEORGIA LEE	R12 T08 S00 FR 6 SD	OR233	5073
170-000-880-3	EDDLBLELUTE SCOTT D TOD GEORGIA LEE	R12 T08 S06 SD 69	OR233	5073
170-000-880-0	EDDLBLELUTE SCOTT D TOD GEORGIA LEE	R12 T08 S06 SD 40	OR233	5073
170-009-460-0	ERLENWEIN MAGER F II & PAMELA D	R12 T08 S00 FR 6	OR192	527
170-009-490-0	GILLESPIE JOSHUA M & KELLEY A	R12 T08 S00 FR 6 SD	OR211	833
170-009-480-0	GILLESPIE JOSHUA M & KELLEY A	R12 T08 S00 FR 6 SD	OR211	833
170-000-820-1	GILLESPIE JOSHUA M & KELLEY A	R12 T08 S06 SD 61	OR211	833
170-015-460-0	GOHRING ZACHARIE S & LAKKEN A S	R12 T08 S00 FR 6 SD	OR222	1138
170-015-450-2	GOHRING ZACHARIE S & LAKKEN A S	R12 T08 S06 SD 63	OR222	1138
170-016-330-0	HENSLEY BRUCE E	R11 T08 S00 FR 6 SD	OR175	372
170-009-320-0	O'BRIEN DAVID R JR	R12 T08 S00 FR 6 SD	OR9	156
170-008-810-0	O'BRIEN REBECCA A	R11 T08 S00 FR 6 SD	OR225	829
170-000-840-0	O'BRIEN REBECCA A	R11 T08 S00 FR 6 SD	OR229	698
170-014-600-0	REESE GARY C & MARGARET M	R12 T08 S00 FR 6 SD	OR214	2903
170-000-880-2	SEIBEL NEIL R	R12 T08 S06 SD 68	OR186	428
170-000-880-4	SHEETS ROY R & GARY L SIX	R12 T08 S06 SD 70	OR167	312
170-000-880-1	SIX DAWN R GARY L & CARL E JR	R12 T08 S06 SD 62	OR122	550
170-014-610-1	TAYLOR TREVOR G & THERESA M	R12 T08 S00 FR 6 SD	OR40	115
170-015-450-0	THORNHILL PAULA J	R12 T08 S00 FR 6 SD	OR204	505
170-005-600-0	THORNHILL PAULA J	R12 T08 S00 FR 6 SD	OR204	505
170-001-800-3	WINDSOR TWP TRUSTEES C/O SHARON FITCH	R12 T08 S06 SD 66		
170-001-800-2	WINDSOR TWP TRUSTEES C/O SHARON FITCH	R12 T08 S06 SD 65		

Boundaries
Type

- County
- Hidden
- Hydro
- Parcel
- ROW
- Section
- Lot
- **** <all other values>



08/10/2020

